

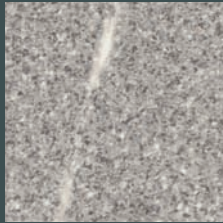
## LAMINATE WORKTOPS 2011 - 2013

**GetaLit®**

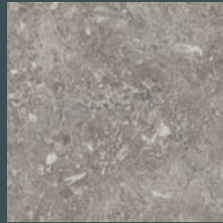
## STONE | STRONG & CONTEMPORARY



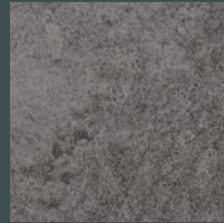
| C 438 Cr |  
kamala grey



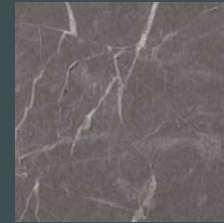
| H 442 Rc |  
pietra piacentina



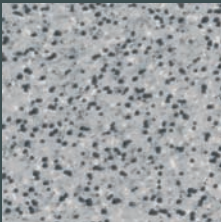
| C 413 Cr |  
arathea concrete



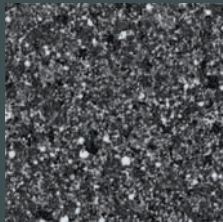
| BN 441 Cr |  
copperfield



| SL 120 Sc |  
marble maquina  
brown grey



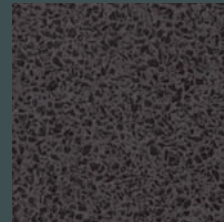
| FU 294 Fb |  
pina grey



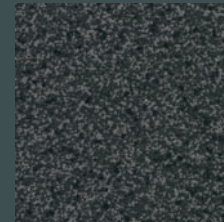
| ST 12 C |  
stone black white



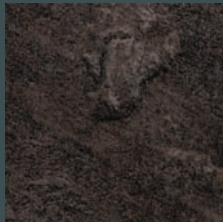
| C 127 Fb |  
marble italy



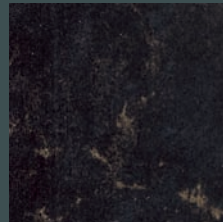
| GN 711 Rc |\*  
fabri anthrazit



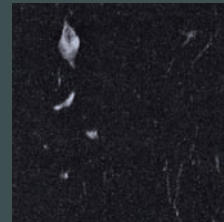
| RS 431 C |  
grey speckle



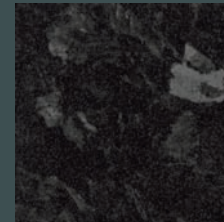
| BT 750 Sc |  
pindos slade



| KP 116 C |  
kleopatra black gold



| BN 112 Sc |  
marble maquina  
caviar grey

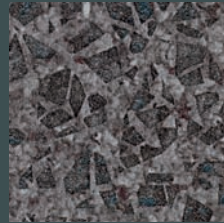


| BT 144 C |\*  
moon star

\* These decors are also available in HighGloss surface.



Photo: GetaLit® kitchen worktop decor MK 194 Bril.



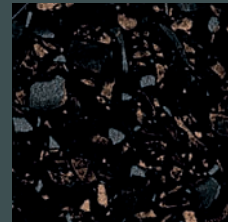
| MK 155 Rc |  
tiziano



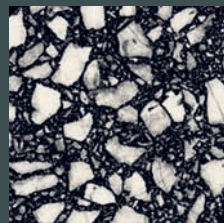
| MK 214 Cr |  
terrazzo stone



| MK 171 Cr |\*  
terrazzo black

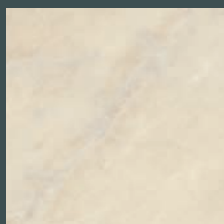


| MK 194 Cr |\*  
terrazzo adige

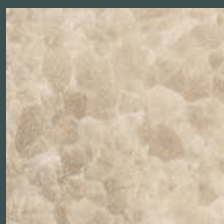


| MK 112 Cr |  
tessera black white

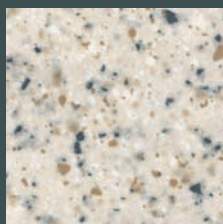
## STONE & FANTASY | SAND SPECTACLE



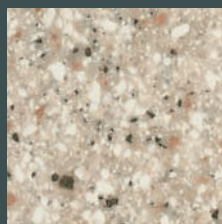
| SL 239 C |  
marble manila



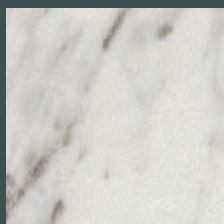
| GT 269 C |  
granite polar



| FM 322 Fb |  
grey flint



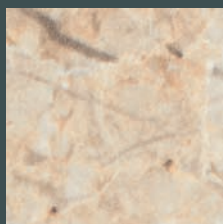
| FN 371 Fb |  
sand stone



| C 242 Rc |  
carrara royal



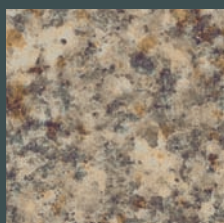
| GN 244 Rc |\*  
fabrini beige



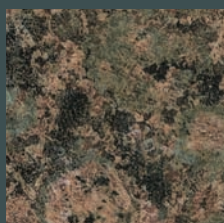
| SL 335 Rc |  
marble alhambra



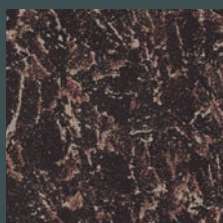
| ME 478 Fs |  
brushed stainless steel



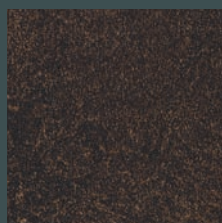
| G 169 C |  
granite walnut



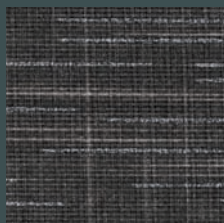
| GT 741 C |  
granite baltik



| Ci 136 C |  
granite chesnut



| LE 734 Pe |  
makalu



| L 441 T |  
brown line



| FM 137 Fb |  
midnight magic

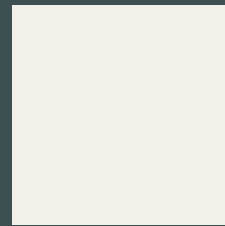


\* These decors are also available in HighGloss surface.

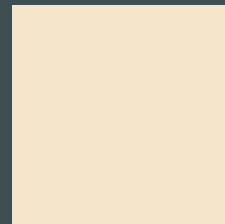
UNI | SOLID COLOURED



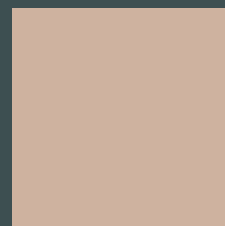
Photo: Ewe ewendition 02C/04 color panna/eiche havanna.



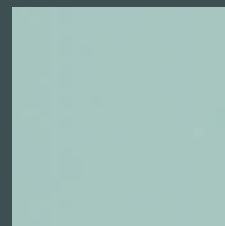
| A 242 Cr |\*  
white



| A 320 Cr |  
sand



| A 332 Cr |  
cappuccino

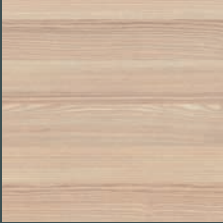


| A 505 Bril |  
glass green



| A 1 Cr |  
black

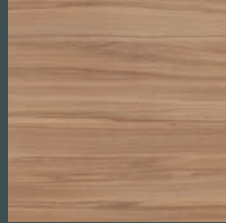
# WOOD | FINE NUANCES



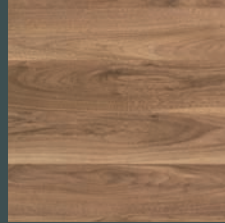
| BBL 355 PoF |  
coimbra



| EIS 344 PoF |  
oak rough sawn



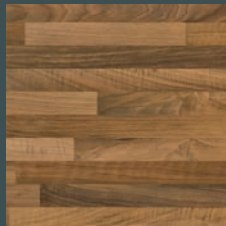
| BU 725 PoF |  
master beech



| NU 374 PoF |  
nut tree bright rustic



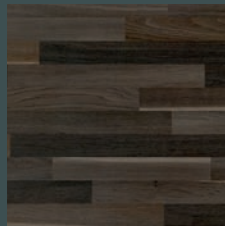
| BBL 242 PoF |  
ajaccio oak



| NU 742 PoF |  
nut tree butcherblock



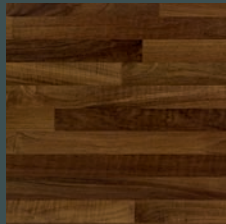
| BBL 739 PoF |\*  
butcherblock wenge



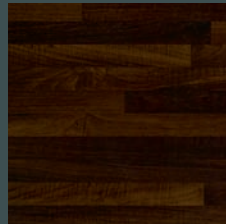
| Ei 396 PoF |  
smoke oak butcherblock



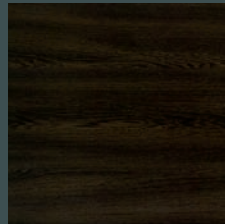
| KA 771 PoF |  
chesnut oviedo



| BBL 467 PoF |  
stab butcherblock  
walnut



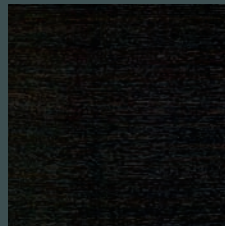
| BBL 714 PoF |  
noce butcherblock



| WE 716 PoF |  
wenge



| AN 340 PoF |  
apple heartwood



| Ei 711 PoF |  
belfort oak

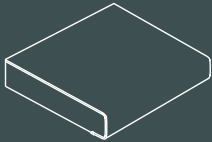


| BU 392 PoF |  
red core beech light

\* These decors are also available in HighGloss surface.

## TECHNICAL INFORMATION | STANDARD FEATURES

### AF 40/133 | TRI LINE PROFILE



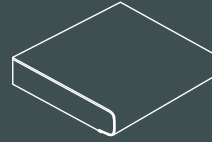
#### SINGLE-POSTFORMED

4100 x 600/650/900/1200 x 39 mm  
5200 x 600/650/900/1200 x 39 mm

#### DOUBLE-POSTFORMED

4100 x 670/900/1200 x 39 mm  
5200 x 670/900/1200 x 39 mm

### AF 40/113 | HIGHGLOSS



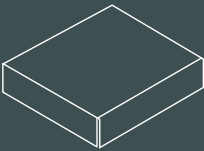
#### SINGLE-POSTFORMED

4100 x 600/650/900/1200 x 39 mm

#### DOUBLE-POSTFORMED

4100 x 670/900/1200 x 39 mm

### AF 40/HPL/PP/EFFECT | 40 mm edged



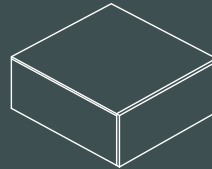
#### SINGLE-EDGED

4100 x 600/650/900/1200 x 39 mm

#### DOUBLE-EDGED

4100 x 670/900/1200 x 39 mm

### AF 60/HPL/PP/EFFECT | 60 mm edged



#### SINGLE-EDGED

4100 x 600/650/900/1200 x 59 mm

#### DOUBLE-EDGED

4100 x 670/900/1200 x 59 mm

Wallback panels and UpStands are available in all 60 decors.  
For exact availability please see decor stock-code guide.



### Quality features



food safe to EN 1186  
and EN 13130



light-fast to EN 438



impact resistant  
to ISO 13894



resistant to common  
household chemicals



abrasion resistant to EN 438



steam resistant to EN 438



heat resistant up to  
230° C

Sales Office United Kingdom

Unit 15 Orbital 25 Business Park | Dwight Road | Watford WD18 9DA

t. +44 1923 294 370 | f. +44 1923 236 121

info@westag.co.uk | www.westag.co.uk

 Plywood/Formwork

 Doors/Frames

 Laminates/Elements

**Westag & Getalit AG**

Postfach 26 29 | 33375 Rheda-Wiedenbrück | Germany

t. +49 5242 17-4400 | f. +49 5242 17-75166

www.westag-getalit.de | le.export@westag-getalit.de